



French know-how





Garden greenhouses range



SUMMARY

Width 2 m

RICHEL greenhouse - 6 m² MODEL - 1 zipped door 3

Width 3 m

RICHEL greenhouse - 9 m² MODEL - 1 zipped door 4

RICHEL greenhouse - 9 m² MODEL - 1 hinged door 5

RICHEL greenhouse - 13.5 m² MODEL - 2 zipped doors 6

RICHEL greenhouse - 18 m² MODEL - 2 zipped doors 7

RICHEL greenhouse - 18 m² MODEL - 2 hinged doors 8

Length option RICHEL greenhouse - 9 m² MODEL - 13.5 m² et 18 m² 9

1 hinged door option RICHEL greenhouse - 9 m² MODEL - 13.5 m² et 18 m² 10

Width 4.5 m

RICHEL greenhouse - 20,25 m² MODEL - 1 hinged door 11

RICHEL greenhouse - 27 m² MODEL - 2 hinged doors 12

Length option RICHEL greenhouse - 20.25 and 27 m² MODEL 13

1 hinged door option RICHEL greenhouse - 20.25 m² MODEL 14

Options

RICHEL Lateral ventilation option - 18 m² - 27 m² MODEL 15

RICHEL Shade sail option 16

Accessories &

after-sales service RICHEL Group 17, 18, 19, 20

Exposition model 21

Photos gallery 22

Width 2 m greenhouse

6 m² Model / 1 zipped door



Dimensions

Width : 2 m
Depth : 3 m
Ridge height : 2 m
Door width : 1 m
Spacing between arches : 1.50 m

- Package dimensions : (1 package)
(L x P x H in cm) : 150 x 59 x 13
- Package weight : 40.5 Kg
- Reference : J20300
- GENCOD : 3760100751970



+ PRODUCT :

- Économic
- Quick and easy assembly
- Compact packaging
- Lined cover film (NEW)

Technical characteristics

- ✓ Galvanized steel frame with 32 mm diameter tube arches and 1.5 mm thickness
- ✓ Cover lined with 180 micron Polyethylene film treated for 4 years (2 x 180µ)
- ✓ Ground anchoring by buried film system and base legs
- ✓ Tension and maintenance of the film in pinion by clip system
- ✓ Roll-up zipped door for both simple and optimal ventilation
- ✓ Easy assembly, by screwing and fitting, without specific tools
- ✓ Clear and illustrated assembly instructions

Width 3 m greenhouse

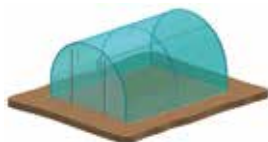


9 m² Model / 1 zipped door

Dimensions



Width : 3 m
Depth : 3 m
Ridge height : 2 m
Door width : 1.50 m
Spacing between arches : 1.50 m



- Package dimensions : (1 package (L x P x H in cm) : 150 x 59 x 13
- Package weight : 45 Kg
- Reference : J30310
- GENCOD : 3760100753288

+ PRODUCT :

- Modular
- 1 zipped door + 1 solid pinion at the rear
- Lined cover film

Technical characteristics

- ✓ Galvanized steel frame with 32 mm diameter tube arches and 1.5 mm thickness
- ✓ Cover lined with 180 microns Polyethylene film treated 4 years (2 x 180)
- ✓ Ground anchoring by buried film system and base legs
- ✓ Tension and maintenance of the film in pinion by clips and tensioners
- ✓ Zipped door for both simple and optimal ventilation
- ✓ Possibility of equipping the greenhouse with a second door or extending it endlessly by module of 1.50 m
- ✓ Easy assembly, by screwing and fitting, without specific tools
- ✓ Clear and illustrated assembly instructions



3 780100 753288

Width 3 m greenhouse

9 m² Model / 1 hinged door



Dimensions

Width : 3 m
Depth : 3 m
Ridge height : 2 m
Door width : 1.50 m
Spacing between arches : 1.50 m

- Package dimensions : (1 package (L x P x H in cm) : 150 x 59 x 13
- Package weight : 58 Kg
- Reference : J30309
- GENCOD : 3760100751543



+ PRODUCT :

- Modular
- Lined cover film
- 1 hinged door + 1 solid pinion at the rear

Technical characteristics

- ✓ Galvanized steel frame with 32 mm diameter tube arches and 1.5 mm thickness
- ✓ Cover lined with 180 microns Polyethylene film treated 4 years (2 x 180)
- ✓ Ground anchoring by buried film system and base legs
- ✓ Tension and maintenance of the film in pinion by clips and tensioners
- ✓ Large arched door at the top for both simple and optimal ventilation
- ✓ Possibility of equipping the greenhouse with a second door or extending it endlessly by module of 1.50 m
- ✓ Easy assembly, by screwing and fitting, without specific tools
- ✓ Clear and illustrated assembly instructions

Width 3 m greenhouse

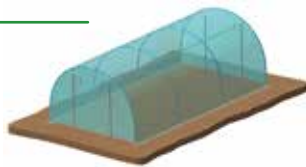


13.5 m² Model / 2 zipped doors

Dimensions



Width : 3 m
Depth : 4.50 m
Ridge height : 2 m
Door width : 1.50 m
Spacing between arches : 1.50 m



- Package dimensions : (2 packages)
(L x P x H in cm) : 150 x 59 x 13
- Total package weight : 65 Kg
- Reference : J30451
- GENCOD : 3760100753271

+ PRODUCT :

- Modular
- 2 hinged doors
- Lined cover film

Technical characteristics

- ✓ Galvanized steel frame with 32 mm diameter tube arches and 1.5 mm thickness
- ✓ Cover lined with 180 microns Polyethylene film treated 4 years (2 x 180μ)
- ✓ Ground anchoring by buried film system and base legs
- ✓ Tension and maintenance of the film in pinion by clips and tensioners
- ✓ 2 zippered doors for easy and optimal ventilation
- ✓ Possibility of extending the greenhouse to infinity per module of 1.50 m
- ✓ Easy assembly, by screwing and fitting, without specific tools
- ✓ Clear and illustrated assembly instructions



Width 3 m greenhouse

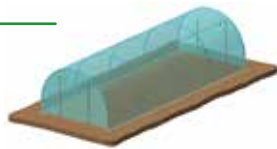


18 m² Model / 2 zipped doors

Dimensions



Width : 3 m
Depth : 6 m
Ridge height : 2 m
Door width : 1.50 m
Spacing between arches : 1.50 m



- Package dimensions : (2 packages)
(L x P x H in cm) : 150 x 59 x 28
- Total package weight : 75 Kg
- Reference : J30604
- GENCOD : 3760100753110

+ PRODUCT :

- Modular
- 2 Zipped doors
- Good ventilation
- Lined cover film

Technical characteristics

- ✓ Galvanized steel frame with 32 mm diameter tube arches and 1.5 mm thickness
- ✓ Cover lined with 180 microns Polyethylene film treated 4 years (2 x 180μ)
- ✓ Ground anchoring by buried film system and base legs
- ✓ Tension and maintenance of the film in pinion by clips and tensioners
- ✓ 2 zipped doors for easy and optimal ventilation
- ✓ Possibility of extending the greenhouse to infinity per module of 1.50 m
- ✓ Easy assembly, by screwing and fitting, without specific tools
- ✓ Clear and illustrated assembly instructions

Width 3 m greenhouse



18 m² Model / 2 hinged doors

Dimensions

Width : 3 m
Depth : 6 m
Ridge height : 2 m
Door width : 1.50 m
Spacing between arches: 1.50 m

- Package dimensions : (2 packages)
(L x P x H in cm) : 150 x 59 x 13
- Total package weight : 100 Kg
- Reference : J30602
- GENCOD : 3760100751956



+ PRODUCT :

- Modular
- 2 Pivot door frame
- Good ventilation
- Lined cover film

Technical characteristics

- ✓ Galvanized steel frame with 32 mm diameter tube arches and 1.5 mm thickness
- ✓ Cover lined with 180 microns Polyethylene film treated 4 years (2 x 180μ)
- ✓ Ground anchoring by buried film system and base legs
- ✓ Tension and maintenance of the film in pinion by clips and tensioners
- ✓ Large arched doors in the upper part for ventilation that is both simple and optimal with the tunnel effect
- ✓ Possibility of extending the greenhouse to infinity per module of 1.50 m
- ✓ Easy assembly, by screwing and fitting, without specific tools
- ✓ Clear and illustrated assembly instructions



3 760100 751956

Width 3 m greenhouse



Length option

Description

Extension length 1.50 m
for greenhouse 9 m² - 13.50 m² - 18 m²

- Package dimensions : (1 package (L x P x H in cm) : 150 x 59 x 13
- Package weight : 16.5 Kg
- Reference : J30159
- GENCOD : 3760100751932



Can only be used in addition to a width 3 m RICHEL greenhouse (cannot be mounted separately)

Technical characteristics

- ✓ Galvanized steel frame with 32 mm diameter tube arches and 1.5 mm thickness
- ✓ Cover lined with 180 microns Polyethylene film treated 4 years (2 x 180)
- ✓ Ground anchoring by buried film system and base legs
- ✓ Tension and maintenance of the film in pinion by clips and tensioners
- ✓ Possibility of extending the greenhouse to infinity per module of 1.50 m
- ✓ Easy assembly, by screwing and fitting, without specific tools
- ✓ Clear and illustrated assembly instructions

Width 3 m greenhouse



Hinged door option

Description

1 additional door for
9 m² - 13.50 m² - 18 m² greenhouse

- Packaging dimensions : (1 package)
(L x P x H in cm) : 150 x 59 x 13
- PPackaging weight : 15 Kg
- Reference : J30009
- GENCOD : 3760100751949



Allows you to equip a 3 m width
RICHEL greenhouse
with a hinged door.

Technical characteristics

- ✓ Galvanized steel frame with 32 mm diameter tube arches and 1.5 mm thickness
- ✓ Tension and maintenance of the film in pinion by clips and tensioners
- ✓ Large arched door at the top for both simple and optimal ventilation
- ✓ Easy assembly, by screwing and fitting, without specific tools
- ✓ Clear and illustrated assembly instructions



Width 4.50 m greenhouse

20.25 m² Model / 1 hinged door



Dimensions

Width: 4.50 m
Depth: 4.50 m
Ridge height: 2.25 m
Door width: 1.45 m
Spacing between arches: 1.50 m

- Packaging dimensions : (4 packages)
(L x P x H en cm) : 231 x 42 x 16
- Total weight packaging : 151 kg
C6510 + C6512 + C6513 + C6514
- Reference : J45451
- GENCOD : 3760100750010



+ PRODUCT :

- 1 Pivot door frame + 1 solid rear pinion gear
- Lined cover film
- Robust
- Modular

Technical characteristics

- ✓ Galvanized steel frame with 32 mm diameter tube arches and 1.5 mm thickness
- ✓ Cover lined with 180 microns Polyethylene film treated 4 years (2 x 180μ)
- ✓ Ground anchoring by buried film system and foot cross
- ✓ Tension and maintenance of the film in pinion by clips and tensioners
- ✓ Large arched door at the top for both simple and optimal ventilation
- ✓ Possibility to equip the greenhouse with a second door or to extend it infinitely by module of 1.50m
- ✓ Easy assembly, by screwing and fitting, without specific tools
- ✓ Clear and illustrated assembly instructions
- ✓ Made in France by the European leader in professional greenhouse
- ✓ Meets greenhouse standard NF EN 13031 - April 1, 2002 (B5)

Width 4.50 m greenhouse

20.25 m² Model / 2 hinged doors



Dimensions

Width : 4.50 m
Depth : 6 m
Ridge height : 2.25 m
Door width : 1.45 m
Spacing between arches : 1.50 m

- Packaging dimensions : (4 packages)
(L x P x H en cm) : 231 x 42 x 16
- Total weight packaging : 188 kg
C6511 + C6512 + C6513 + C6514
- Reference : J45602
- GENCOD : 3760100751963



+ PRODUCT :

- Robust
- Lined cover film
- Modular

Technical characteristics

- ✓ Galvanized steel frame with 32 mm diameter tube arches and 1.5 mm thickness
- ✓ Cover lined with 180 microns Polyethylene film treated 4 years (2 x 180μ)
- ✓ Ground anchoring by buried film system and foot cross
- ✓ Tension and maintenance of the film in pinion by clips and tensioners
- ✓ 2 large arched doors at the top for easy and optimal ventilation with the tunnel effect
- ✓ The greenhouse can be extended indefinitely by modules of 1.50 m
- ✓ Easy assembly, by screwing and fitting, without specific tools
- ✓ Clear and illustrated assembly instructions
- ✓ Meets greenhouse standard NF EN 13031 - April 1, 2002 (B5)



Width 4.50 m greenhouse



Length option

Description

Complément de longueur
1.50 m pour serre 20.25 m² ou 27 m²

- Dimensions du colis : (1 colis)
(L x P x H en cm) : 231 x 42 x 16
- Poids du colis : 31 Kg
- Référence : J45150
- GENCOD : 3760100750256



Utilisable uniquement en complément
d'une serre RICHEL 20.25 m² ou 27 m²
(ne peut être monté séparément)

Technical characteristics

- ✓ Armature en acier galvanisé avec des arceaux en tube de diamètre 32 mm et d'épaisseur 1.5 mm
- ✓ Couverture doublée en film Polyéthylène 180 microns traité 4 ans (2 x 180μ)
- ✓ Ancrage au sol par système de film enterré et croix de pied
- ✓ Tension et maintien du film en pignon par clips et tendeurs
- ✓ Possibilité de rallonger la serre à l'infini par module d'1.50 m
- ✓ Montage facile, par vissage et emboîtement, sans outillage spécifique
- ✓ Notice de montage claire et illustrée

Width 4.50 m greenhouse



Door option

Description

1 porte supplémentaire
pour serre 20.25 m²

- Dimensions du colis : (1 colis)
(L x P x H en cm) : 206 x 38 x 12
- Poids du colis : 30 Kg
- Référence : J45006
- GENCOD : 3760100751109



Permet d'équiper une serre RICHEL 20.25 m²
d'une 2^{ème} porte

Technical characteristics

- ✓ Armature en acier galvanisé avec des arceaux en tube de diamètre 32 mm et d'épaisseur 1.5 mm
- ✓ Tension et maintien du film en pignon par clips et tendeurs
- ✓ Large porte cintrée en partie haute pour une ventilation à la fois simple et optimale
- ✓ Montage facile, par vissage et emboîtement, sans outillage spécifique
- ✓ Notice de montage claire et illustrée



Option

Lateral ventilation



Description

For 18 m² greenhouse
(new and old model)
or 27 m².

- Packaging dimensions : (1 package)
(L x P x H in cm) : 150 x 59 x 13
- Package weight : 30 Kg
- Reference : J10001
- GENCOD : 3760100752151



+ PRODUCT :

- Natural ventilation
- 3 possible positions
- Used by professionals

Technical characteristics

- ✓ Galvanised steel frame
- ✓ Anchoring to the ground with screw anchors
- ✓ Tensioning and holding the cover film with clips
- ✓ Roll-up system with crank handle
- ✓ Easy to assemble, by screwing and plugging in, without special tools
- ✓ Clear, illustrated assembly instructions
- ✓ Adjustable opening height up to 80 cm from the floor
- ✓ Possibility to position the side ventilation on the right or left side of the greenhouse

Option

Shade sail



Description

- Shade sails available :
- In various lengths from 1.50 m to 6 m in kit form with accessories
 - In rolls of 25 ml
 - Cut to size per metre

- Packaging dimensions : (1 package) (L x P x H in cm) : 70 x 40 x 13
- Package weight : from 0.9 kg to 2.9 kg for shading kits



+ PRODUCT :

- Reduction of heat inside the greenhouse
- Adapts to all greenhouse styles

Technical characteristics

- ✓ 55% UV treated shade sail
- ✓ Largeur unique de la laize : 4 m
- ✓ Clips, rope and pegs supplied in the shade sail kits
- ✓ Tensioning and holding the shade sail with clips, ropes and ground stakes
- ✓ Easy to assemble, without special tools
- ✓ Clear, illustrated assembly instructions

Accessories and after-sales service RICHEL Group



Polyane film 5TT

Film specially developed for multi-hood structures to provide to provide maximum light while guaranteeing a very good thermal insulation.

Description :

PE crystal film width 6.50 m (roll 50 ml) - 200 μ

- Packaging dimensions :
1 x (190 x 30 x 30 cm)

- Reference : P836650F



PE crystal cut film - width 6.50 (per ml) - 200 μ

- Reference : P836650FD



+ PRODUCT :

- High durability
- Highly resistant in windy and rainy windy and rainy regions

Technical characteristics

- ✓ Thickness: 200 μ
- ✓ Colour: Colourless - Very transparent
- ✓ Additional treatment: Anti UV 4 seasons
- ✓ Thermicity: > 83%
- ✓ Overall light transmission: > 85%
- ✓ High durability
- ✓ Multilayer thermal film, colourless and highly transparent. It contains materials with high mechanical materials and also a dust layer. and an anti-dust layer.



Accessories and after-sales service

RICHEL Group

Diamond diffusing film

Specially developed film for all types of structures and for market gardening which require intensive intensive pesticide treatment.



Description :

PE film width 8 m (roll 50 ml) - 200 μ

- Packaging dimensions :
1 x (190 x 30 x 30 cm)
- Reference : P836800F



Film PE à la coupe - laize 8 (le ml) - 200 μ

- Reference : P836800FD



+ PRODUCT :

- High durability
- Highly resistant in windy and rainy windy and rainy regions

Technical characteristics

- ✓ Thickness: 200μ
- ✓ Colour: Colourless - Very transparent
- ✓ Additional treatment: Anti UV 4 seasons
- ✓ Thermicity: > 80%.
- ✓ Overall light transmission: > 91%
- ✓ Pesticide resistance: very good
- ✓ Dustproof

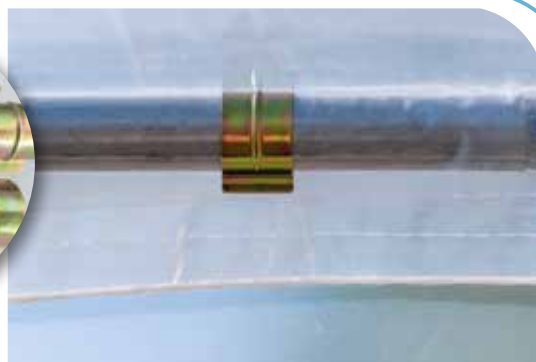
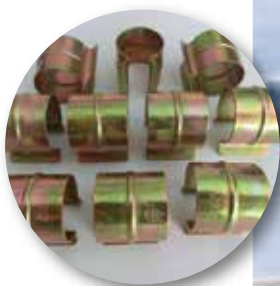
Accessories and after-sales service

RICHEL Group



Bag of 10 Steel Clips
diameter 32 mm

- Package dimensions : 1 x (24 x 12 x 3 cm)
- Package weight : 0.21 Kg
- Reference : P620003
- GENCOD : 3557406200031



Technical characteristics

- ✓ The clips are made of steel (corrosion resistant), Ø 32 mm.
- ✓ They adapt perfectly to the standard tubes of the Richel greenhouses.
- ✓ They are used to hold the tarps and gable covers of your Richel tunnel greenhouse.
- ✓ They are delivered in bags of 10 pieces.

PE adhesive of
repair - TESA® 4668

Description :

Unit roll - Width : 50 mm - Length : 33 m

- Package dimensions : 1 x (27 x 17 x 5 cm)
- Package weight : 0.27 Kg
- Reference : P466850
- GENCOD : 3557404668505

*Ideal for repairing
the tarps for
the greenhouses.*



Technical characteristics

- ✓ PE adhesive: 110 µ (acrylic adhesive mass).
- ✓ +++ wide variety of indoor/outdoor applications.
- ✓ Resistant to UV, weathering, ageing, abrasion and solvents.

Accessories and after-sales service RICHEL Group



After-sales service, advice and live customer support on a simple phone call.
Our offices are open from Monday to Friday to answer all your technical questions.

All spare parts for Richel greenhouses are available in after-sales service, with no time limit, in permanent stock and deliverable within 7 to 10 working days.

You can visit our brand new website www.mvindustrie.fr to find the entire Richel range. Here you will find product data sheets, technical specifications, photos, clear, detailed and colourful instructions (downloadable in PDF), greenhouse options.

We do our utmost to guarantee you quality products made in France.

Contact and after-sales service at :



Authorised Distributor

Tél. 33 (0)4 75 61 40 70 - Fax 33 (0)4 75 61 46 01
info@mvindustrie.fr - www.mvindustrie.fr

Exposition Model



Dimensions

- .Size : 80 x 120 x 155 cm
- .Total weight : 50 kg



+ PRODUCT :

- Use of real materials
- Good visibility with 1 integrated POS
- Mobile and easy to install
- The customer can touch and appreciate the quality of the components of a Richel greenhouse
- Small in size

Technical characteristics

- ✓ Reduced model that keeps materials identical to Richel garden greenhouses: galvanized steel tube diameter 32 mm, thickness 1.5 mm, 200µ UV-treated film, mounting plates, zipped door and 32 mm steel clips
- ✓ Moisture resistant materials, long service life
- ✓ POS advertising which presents the range and advice for using a greenhouse
- ✓ The exhibition model is fully assembled and delivered directly to the store
- ✓ Department set-up without the need for an installer

Photos Gallery



2 x 3 m (6 m²) Greenhouse

4.5 x 6 m (27 m²) Greenhouse



3 x 6 m Greenhouse / lateral ventilation (18 m²)



3 x 6 m Greenhouse / Lateral ventilation and shade sail (18 m²)



Serre 2 x 3 m (6 m²)



4.5 x 6 m (27 m²) Greenhouse



NEW :
Large professional
greenhouse
8 m wide

*Ask your authorised Richel Group dealer
 for more information.*



2 x 3 m (6 m²) Greenhouse



3 x 6 m Greenhouse / Lateral ventilation (18 m²)



Industrial site 7.5 Ha Eygalières - France

RICHEL greenhouses benefit from the technology and 50 years of experience of the **RICHEL Group**, Europe's leading manufacturer of plastic-covered greenhouses for professionals.

The design and manufacturing site based in the south of France produces 3 million m² of greenhouses per year and markets its products in over 80 countries.

In 2008, the **RICHEL Group** launched a range of greenhouses for the general public to enable individuals to garden like professionals.



Authorised Distributor

487, Allée des Platanes Z.A. Champgrand
26270 LORIOL / DRÔME - FRANCE
Tél. 33 (0)4 75 61 40 70 - Fax 33 (0)4 75 61 46 01
info@mindustrie.fr - www.mindustrie.fr

